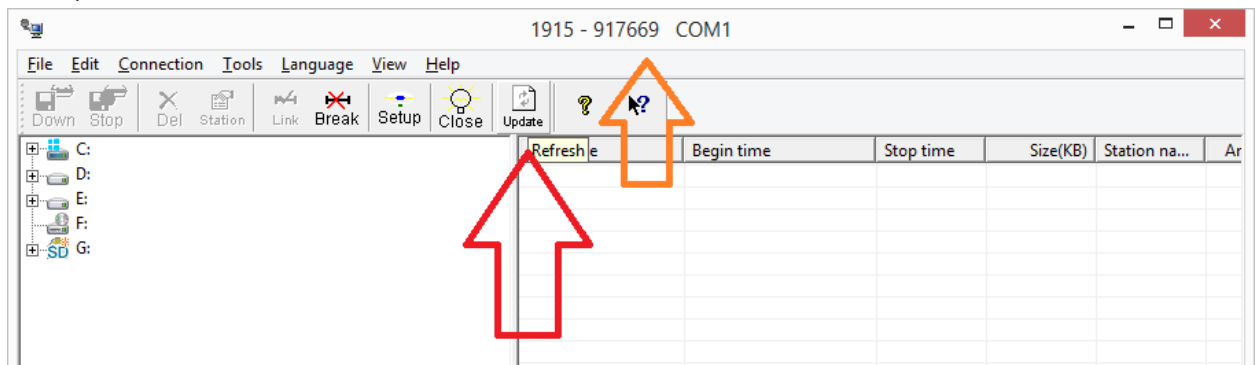


# Connecting to the OEM6 GNSS Board in a CHC X900+ GPS Receiver

By: Mark Silver, [ms@igage.com](mailto:ms@igage.com)

Date: 11 April 2014

1. Download a recent copy of the HCLoader program (<http://x9gps.com/Tools/Utilities/HCLoader/index.html> )
2. Download the latest copy of 'NovAtel Connect' from the NovAtel website (<http://www.novatel.com/support/info/documents/809> ) Install NovAtel Connect on your PC. (I have verified that it runs on Win8.1 64-bit.
3. Run HCLoader, click on the 'Update' button (red arrow) until the device serial number (orange arrow) is shown:

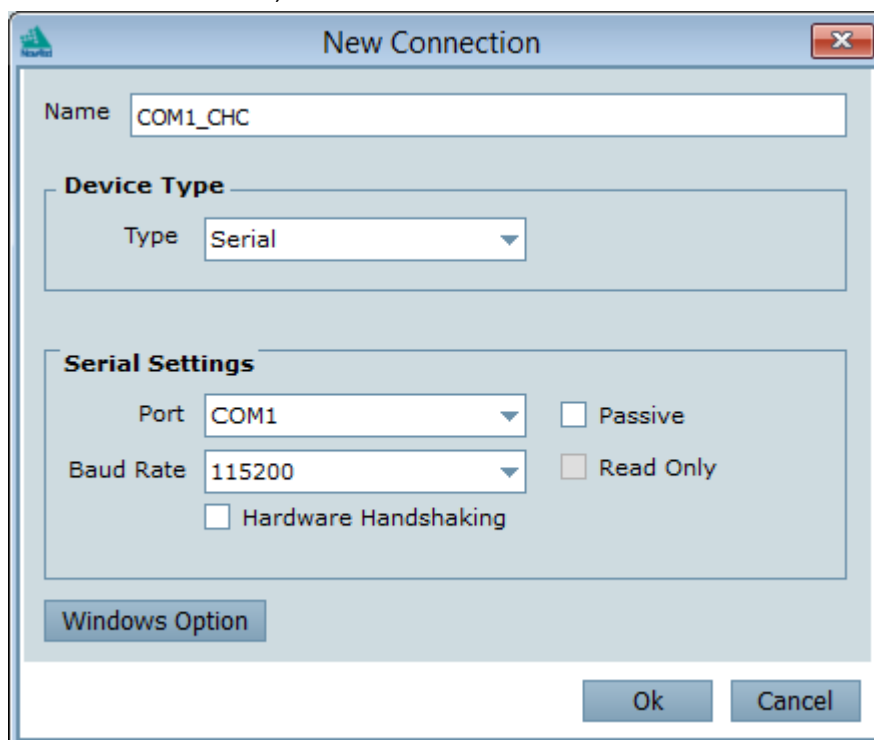


- Click on 'Tools: COM F3':



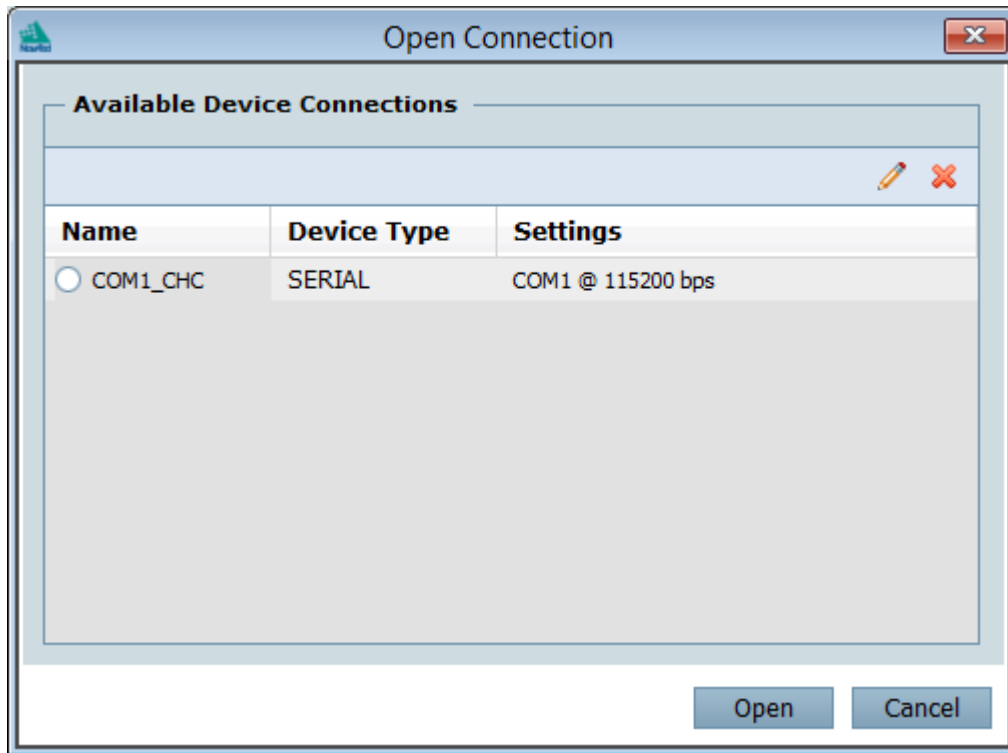
Enter ST,B1 command, then click on 'Send'.

- Click on 'Exit' then close the HCLoader program.
- Start 'NovAtel Connect', make a new connection:



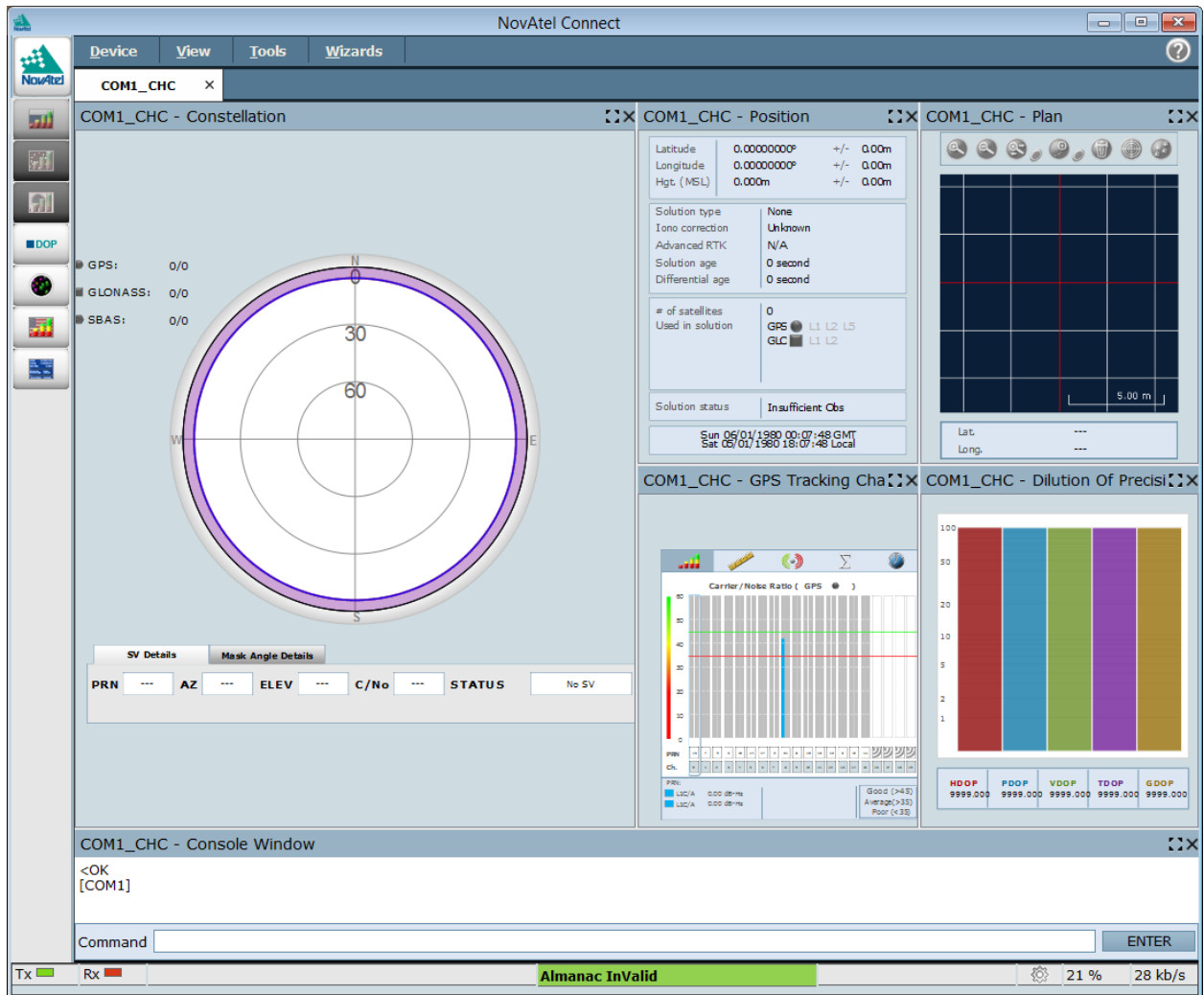
Click on 'Ok'

7. The 'Open Connection' screen will be shown:

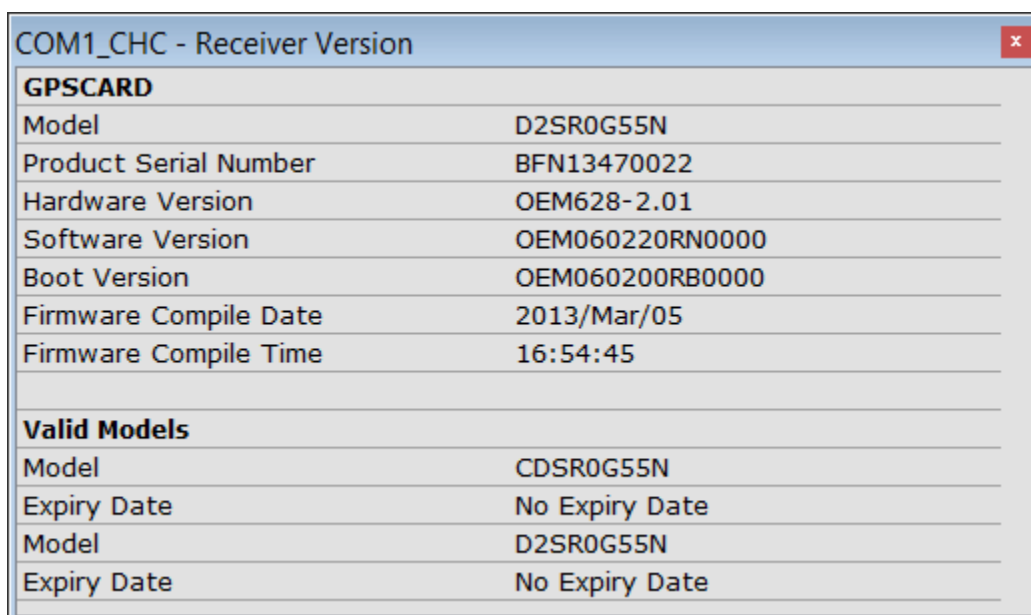


Select the new connection and click on 'Open'.

8. After 20 seconds, the main screen of NovAtel Connect will be shown:



9. You can check on 'View: Receiver Version Window' to see detailed GNSS Board information:



The screenshot shows a window titled 'COM1\_CHC - Receiver Version' with a red close button in the top right corner. The window contains two sections: 'GPSCARD' and 'Valid Models'. Each section has a table with two columns: a label and a value.

GPSCARD	
Model	D2SR0G55N
Product Serial Number	BFN13470022
Hardware Version	OEM628-2.01
Software Version	OEM060220RN0000
Boot Version	OEM060200RB0000
Firmware Compile Date	2013/Mar/05
Firmware Compile Time	16:54:45

Valid Models	
Model	CDSR0G55N
Expiry Date	No Expiry Date
Model	D2SR0G55N
Expiry Date	No Expiry Date

10. There is a 'Factory Hard Reset' command at the bottom of the 'Device' menu list if needed.